

Anthology Photography Fiction Fishing  
Christianity Art Cooking Essays  
Buddhism Freemasonry Medicine Biology  
Music Ancient Egypt Evolution

Carpentry Physics Dance Geology  
Mathematics Fitness Shakespeare  
Science Yoga Marketing Confidence  
Immortality Biographies Poetry

# Forgotten Books

— [www.forgottenbooks.com](http://www.forgottenbooks.com) —

Chemistry History Law Accounting  
Philosophy Anthropology Alchemy Drama  
Quantum Mechanics Atheism Sexuality  
Mental Health Ancient History Criminal  
Engineering Shipbuilding Languages Sport  
Paleontology Neuroscience Islam  
Metaphysics Investment Archaeology

Copyright © 2016 FB &c Ltd.

All rights reserved. No part of this publication may be reproduced, distributed, or transmitted in any form or by any means, including photocopying, recording, or other electronic or mechanical methods, without the prior written permission of the publisher, except in the case of brief quotations embodied in critical reviews and certain other noncommercial uses permitted by copyright law.

SALE NUMBER 1579  
ON PUBLIC EXHIBITION FROM SUNDAY, APRIL TWENTY-FOURTH

GOLD BROCADES, TAPESTRIES,  
VELVETS, BUDDHIST SCRIPTURES  
OF THE MING DYNASTY, AND  
DECORATIVE MAO-CHANG RUGS

A COLLECTION FORMED BY

KOZEN SATO

BUDDHIST TRAVELLER IN NORTHERN  
CHINA AND MONGOLIA

TO BE SOLD  
SATURDAY AFTERNOON, APRIL THIRTIETH  
AT TWO-THIRTY O'CLOCK

THE ANDERSON GALLERIES

[MITCHELL KENNERLEY, PRESIDENT]

PARK AVENUE AND FIFTY-NINTH STREET, NEW YORK

1921

# CONDITIONS OF SALE

1. All bids to be PER LOT as numbered in the Catalogue.
2. The highest bidder to be the buyer; in all cases of disputed bids the lot shall be resold; but the Auctioneer will use his judgment as to the good faith of all claims and his decision shall be final. He also reserves the right to reject any fractional or nominal bid which in his judgment may delay or injuriously affect the sale.
3. Buyers to give their names and addresses and to make such cash payments on account as may be required, in default of which the lots purchased to be resold immediately.
4. The lots to be taken away at the buyer's expense and risk within twenty-four hours from the conclusion of the sale, and the remainder of the purchase money to be absolutely paid on or before delivery, in default of which The Anderson Galleries, Incorporated, will not be responsible if the lot or lots be lost, stolen, damaged, or destroyed, but they will be left at the sole risk of the purchaser, and subject to storage charges.
5. To prevent inaccuracy in delivery, and inconvenience in the settlement of purchases, no lot will be delivered during the sale.
6. All lots will be exposed for public exhibition in The Anderson Galleries before the date of sale, for examination by intending purchasers, and The Anderson Galleries, Incorporated, will not be responsible for the correctness of the description, authenticity, genuineness, or for any defect or fault in or concerning any lot, and makes no warranty whatever, but will sell each lot exactly as it is, WITHOUT RECOURSE. But upon receiving before the date of sale, expert opinion in writing that any lot is not as represented, The Anderson Galleries, Incorporated, will use every effort to furnish proof to the contrary, and in default of such proof the lot will be sold subject to the declaration of the aforesaid expert, he being liable to the owner or owners thereof for damage or injury occasioned by such declaration.
7. TERMS CASH. Upon failure to comply with the above conditions any sum deposited as part payment shall be forfeited, and all such lots as remain uncleared after twenty-four hours from the conclusion of the sale, will be resold by either private or public sale at such time as The Anderson Galleries, Incorporated, shall determine, without further notice, and if any deficiency arises from such re-sale it shall be made good by the defaulter at this sale together with all the expenses incurred thereby. This condition shall be without prejudice to the right of The Anderson Galleries, Incorporated, to enforce the contract with the buyer, without such re-sale.
8. BIDS. We make no charge for executing orders for our customers and use all bids competitively, buying at the lowest price permitted by other bids.
9. The Anderson Galleries, Incorporated, will afford every facility for the employment of carriers and packers by the purchasers, but will not be responsible for any damage arising from the acts of such carriers and packers.

*Priced Copy of the Catalogue may be secured for fifty cents  
for each session of the sale*

## THE ANDERSON GALLERIES

PARK AVENUE AND FIFTY-NINTH STREET

NEW YORK

Telephone, Plaza 9356

Catalogues on request.

SALES CONDUCTED BY MR. FREDERICK A. CHAPMAN

ORDER OF SALE

SALE SATURDAY AFTERNOON, APRIL THIRTIETH

A COLLECTION OF EIGHTY-SIX GOLD BROCADES, TAP- ESTRIES AND VELVETS	Lots 1- 86
SEVEN CHINESE BUDDHIST SCRIPTURES OF THE MING DYNASTY	87- 93
A COLLECTION OF SIXTY-SEVEN DECORATIVE MAO- CHANG RUGS	94-160





SALE SATURDAY AFTERNOON, APRIL 30TH  
AT TWO-THIRTY O'CLOCK

LOTS 1-160

A COLLECTION OF EIGHTY-SIX GOLD BROCADES,  
TAPESTRIES AND VELVETS

LOTS 1-86

The narrow strips of gold brocade are known as "Ohi". They were used by Buddhist priests as prayer-mats during the ritual ceremony. They consist of rare and valuable textiles from China and Japan, which only emperors, empresses and the nobility were allowed to wear.

- 1 CHAKINRAN BROCADE ABOUT 1750  
A conventional wave design in gold, on a light brown background. Part of Noh dancing costume of the XVIIth century. Size: 13 x 50 inches

- 2 DONSU SILK BROCADE ABOUT 1600  
Circular crests and vine-scrolls in gray on a terra-cotta background. Size: 11 x 60 inches

- 3 GREEN KINRAN ABOUT 1650  
Circular cloud-crests in gold on a willow leaf green ground. Size: 11 x 58 inches

- 4 INDIGO BLUE NISHIKI ABOUT 1675  
Dragon crests and swastika patterns in red, blue and gold on terra-cotta ground. Size: 11 x 62 inches

- 5 RED NISHIKI AND KINRAN BROCADES ABOUT 1675  
Made of five different textiles of valuable gold brocades. Size: 12 x 60 inches

- 6 IMPORTANT INKIN SILK ABOUT 1675  
On a deep purple background is a pattern of flying storks, and clouds printed in gold. Size: 10 x 48 inches  
"Inkin" means "impressed with gold". It is the oldest method of decorating silk, and exceedingly rarely found.

7 IMPORTANT ASHIKAGA KINRAN ABOUT 1525

7- A dark green ground, with the ICHOZURU-KIKU pattern, or single stem chrysanthemum, in light brown, green and gold.

Size: 13 x 62 inches

13- 8 DARK BLUE NICHU-ZURU KINRAN ABOUT 1650

Double-stem peonies and leaves in green, on a jet blue ground. The example is known as ANRAKUAN, the name of the temple where the brocade originates.

Size: 10 x 62 inches

1/6- 9 GREEN KINRAN ABOUT 1750

Stream motive, and golden maple leaves on a deep green background, with purple cord lines.

Size: 13 x 60 inches

0- 10 SALMON PINK KINRAN ABOUT 1675

Peonies and plum branches bearing golden flowers.

Size: 12 x 62 inches

1/2- 11 RED NICHU-ZURU KINRAN ABOUT 1650

Scrolls of double stemmed peonies, or Nichu-Zuru pattern. A valuable example.

Size: 13 x 62 inches

1/1- 12 KARAORI BROCADE ABOUT 1550

Imperial Kiri crests in polychrome on pale olive green ground.

Size: 13 x 60 inches

1/2- 13 RED NISHIKI BROCADE ABOUT 1750

Rosette and jewel patterns. Gold on salmon pink ground.

Size: 12 x 62 inches

1/5- 14 GREEN DONSU BROCADE ABOUT 1650

Dragons and clouds in various ecru and blue shades, designed on an olive green background.

Size: 12 x 56 inches

1/3- 15 KINJI KARAORI ABOUT 1675

Blooming Kiri crests in terra-cotta red and pale blue, with broken diaper pattern in steel blue. Buff Kinji background.

Size: 13 x 62 inches

1/6- 16 IMPORTANT CHA-KINRAN ABOUT 1675

Dragons and jewel symbols in pale green and blue heightened with gold, on an ecru background.

Size: 12 x 64 inches

- 13 17 BLUE SHOKKO NISHIKI ABOUT 1750  
Dragon and cloud pattern in polychrome and gold. Woven  
in Shokn, China. Size: 12 x 64 inches
- 13- 18 RED ICHO-ZURU KINRAN ABOUT 1775  
Scrolls of single stemmed chrysanthemums and peonies,  
woven in gold on a salmon pink ground. Size: 13 x 64 inches
- 10- 19 BLUE CHINESE SHICHIN ABOUT 1750  
The peony flower pattern, known as "ICHOZURU."  
Size: 11 x 64 inches
- 15- 20 MOMOYAMA KINRAN ABOUT 1590  
Open fans and floral scrolls in terra-cotta red and gold, on an  
indigo blue background. Size: 13 x 56 inches  
Woven by the order of Hideyoshi.
- 15- 21 MOMOYAMA KINRAN ABOUT 1590  
Open fans and floral scrolls in terra-cotta red and gold on an  
indigo blue background. Size: 13 x 56 inches  
Woven by the order of Hideyoshi.
- 10- 22 BLUE DONSU BROCADE ABOUT 1775  
Rush leaves in white, in which are featured a duck and drake  
in faint gold threads, on a pale blue background.  
Size: 12 x 78 inches
- 9- 23 BLUE DONSU BROCADE ABOUT 1775  
Rush leaves in white, wherein appear a duck and drake in  
faint gold threads, on a pale blue background.  
Size: 12 x 78 inches
- 12- 24 IMPORTANT GINRAN BROCADE ABOUT 1775  
Medallions of dragons and Howo birds with clouds woven with  
delicate blue and silver threads. Size: 12 x 62 inches
- 11- 25 ATSUITA KINRAN BROCADE ABOUT 1800  
Waterfall and pine tree design. Rich tone in gold and buff.  
Size: 13 x 62 inches
- 11- 26 ATSUITA KINRAN BROCADE ABOUT 1800  
Over a stream a golden bridge passes, nearby a weeping-  
willow tree. Rich tones in gold and buff. Size: 13 x 54 inches



- 27 RARE YAMATO NISHIKI ABOUT 1600  
Flying Howo birds and musical instruments in polychrome, on a gold and terra-cotta ground. Four small gold and aubergine brocades applied, woven with the figures of four cardinal deities. Size: 11 x 62 inches
- 28 RED DONSU BROCADE ABOUT 1750  
Hydrangeas, lilies and chrysanthemums woven in polychrome on a red background, with an ornate wisteria crest in gold. Size: 12 x 52 inches
- 29 DEEP DLUE KINRAN ABOUT 1775  
Howo birds and dragon crests on a subdued green, brown and gold trellis, against a dark blue ground. Size: 12 x 56 inches
- 30 RED NISHIKI BROCADE ABOUT 1650  
Various medallions composed of dragons, peonies, Howo birds and fu dogs, in polychrome, heightened with gold, on a red ground. An important and valuable example. Size: 13 x 66 inches
- 31 DARK BLUE DONSU ABOUT 1575  
Dragon crests and clouds in various shades of blue and brown. gold heightening on the dragon. Size: 16 x 62 inches
- 32 KINRAN BROCADE ABOUT 1750  
Howo bird crests in blue and white with gold Kiri flower scrolls on a salmon pink ground. Size: 11 x 60 inches
- 33 RED NISHIKI BROCADE ABOUT 1775  
Indian peonies and leaves in various green shades on a red ground. Size: 13 x 50 inches
- 34 KAGA YUZEN SILK ABOUT 1775  
A naturalistic design, in exquisite violet, of blooming cherry flowers and pine trees in yuzen dye, sparingly embroidered. Lined with green Aya silk. Size: 13 x 56 inches
- 35 GREEN KINRAN BROCADE ABOUT 1700  
Peonies in subdued terra-cotta and gold on a green background. Size: 10 x 34 inches

- 36 IMPORTANT TAPESTRY ABOUT 1700  
 31- Peonies and Howo bird in delicate blue, green, buff and violet, on a golden yellow background. Lined with purple Aya silk. Size: 11 x 60 inches
- 37 IMPORTANT TAPESTRY ABOUT 1700  
 37- On a golden yellow background the Howo bird and peony motives, with clouds done in various shades of blue and green, heightened with violet. Size: 11 x 60 inches
- 38 RARE GREEN DONSU ABOUT 1775  
 15- Various panels with Finjiyama landscapes. Exquisite olive green toned down with deep blues and browns. Size: 12 x 50 inches
- 39 IMPORTANT CHINESE SHICHIN ABOUT 1725  
 1- A conventional flower pattern enclosing another small red mokko flower, on a deep blue ground. Size: 12 x 68 inches
- 40 CHINESE SHICHIN BROCADE ABOUT 1700  
 7- Dragons and peonies in gold, brown and green, on a mustard yellow ground. Size: 14 x 60 inches
- 41 RED KINRAN ABOUT 1700  
 12- Large peonies in subdued green and white with golden leaves and stems. Size: 11 x 56 inches
- 42 RED ICHŌZURU KINRAN ABOUT 1650  
 - Peony scroll in cream blue and gold on a red background. Size: 12 x 34 inches
- 43 BROWN SHICHIN BROCADE ABOUT 1775  
 8- Floral patterns and jewel emblems. Size: 25 x 25 inches
- 44 VELVET SQUARE ABOUT 1750  
 13- A piece of deep blue uncut velvet, upon which are depicted the various objects used in children's parties. Size: 26 x 26 inches
- 45 RARE CHINESE VELVET SQUARE ABOUT 1750  
 15- Magnificent dull red background, with a floral pattern in gold under the threads. Size: 22 x 27 inches

- 46 SMALL TAPESTRY ABOUT 1775  
Camellias and flying bird done in harmonious colors on a gray background, Size: 13 x 21 inches
- 47 SMALL TAPESTRY ABOUT 1800  
In one corner, a heron and lotus flower, in the opposite corner a blooming iris, done in natural colors on a warm gray background. Size: 20 x 20 inches
- 48 SQUARE TAPESTRY ABOUT 1750  
In a rockery where camellias bloom are seen a flying Howo bird and sparrow. Exquisite coloring on a warm gray background. Size: 26 x 26 inches
- 49 IMPORTANT SQUARE TAPESTRY  
In a rockery are birds and flowers delicately colored on a gray background. (Slightly repaired.) Size: 25 x 25 inches
- 50 RARE YEZO NISHIKI BROCADE ABOUT 1700  
Conventional peony design in red, green and gray, on a deep blue background. Size: 26 x 26 inches
- 51 IMPORTANT NICHOSURU BROCADE ABOUT 1600  
Double stemmed peonies in scrolls in brown, on an indigo blue ground. Size: 26 x 31 inches
- 52 RARE GOLD NISHIKI BROCADE  
Flying storks and clouds on a light brown and gold ground. (Slightly damaged by burning incense.) Size: 27 x 27 inches
- 53 RARE CHINESE SHICHIN ABOUT 1725  
Delicate floral pattern in green, blue, yellow and gray, on a light brown ground. Size: 20 x 21 inches
- 54 BROWN NISHIKI BROCADE ABOUT 1650  
Delicate green and gold Howo and dragon crests with various floral scrolls, on a brown background. Size: 21 x 21 inches
- 55 RARE CHINESE BROCADE KANG-HSI PERIOD  
Peonies and leaves in modulated red and pink, on a green background. A valuable example woven in the Kang-Hsi period. (1662-1722.) Size: 26 x 29 inches



- 56 EMBROIDERED SILK SQUARE ABOUT 1650  
 7- Floral pattern with fans of court ladies. Polychrome embroidery on white Aya silk. Size: 33 x 33 inches
- 57 RED CREPE EMBROIDERY ABOUT 1725  
 5- Blossoming plum tree and fagot fence in gold threads. Size: 25 x 28 inches
- 58 SILK CREPE FUKUSA ABOUT 1850  
 2- Group of Japanese boys playing. Yuzen dye on a gray ground. Size: 13 x 15 inches
- 59 SILK CREPE FUKUSA ABOUT 1800  
 9- Nanten berry bush on blue Aya-ori silk. Size: 18 x 19 inches
- 60 EMBROIDERED FUKUSA ABOUT 1850  
 11- In high relief a circular ivy crest made of gold threads. With scrolls and bamboo leaf on blue ground. Size: 24 x 39 inches
- 61 ANTIQUE EMBROIDERY ABOUT 1750  
 1- Large plum blossoms and birds in various colors and gold, on a blue ground, partly treated with Yuzen dye. Size: 22 x 35 inches
- 62 RED CREPE EMBROIDERY ABOUT 1800  
 1- Young pine tree and flying white stork. Size: 18 x 18 inches
- 63 VIOLET CREPE SILK SQUARE ABOUT 1800  
 1- Cherry blossoms by a stream. Yuzen stencil work and partial embroidery. Size: 26 x 29 inches
- 64 SMALL TAPESTRY ABOUT 1775  
 5- Altar cover. A stork fording an iris grown pool. Exquisite soft coloring in green, blue and gray.
- 65 CHINESE TAPESTRY SQUARE ABOUT 1775  
 10- Portrait of 'Si-Wan-Mu, with attendant. Beautiful composition in blue and pink, on a warm gray background. With a brocade border. Size: 32 x 35 inches



- 66 IMPORTANT GOLD BROCADE ABOUT 1775  
 Deep blue background, famous Nichozuru pattern, double stemmed peonies, scrolls. Brown Donsu silk border.  
 Size: 27 x 31 inches
- 67 RED KINRAN ABOUT 1700  
 Dragon and cloud pattern with jewel emblems.  
 Size: 16 x 21 inches
- 68 RARE SILVER BROCADE ABOUT 1600  
 Lozenge pattern enclosing a floral hexagonal motive. Light brown and deep blue with silver threads.  
 Size: 26 x 26 inches
- 69 RED NISHIKI BROCADE ABOUT 1775  
 Peony scrolls in green and cream. Size: 26 x 27 inches
- 70 RARE GREEN BROCADE ABOUT 1700  
 Famous Senba-Zuru pattern, or thousand flying storks. Gold on a camellia green.  
 Size: 27 x 31 inches
- 71 GREEN GOLD BROCADE ABOUT 1775  
 Dragon crests and wavy lines in gold on a green background.  
 Size: 25 x 28 inches
- 72 CHINESE SHICHIN BROCADE BAND ABOUT 1750  
 Dragon and wave pattern in polychrome, on a rich brown satin background, with dragon crests. Size: 30 x 32 inches
- 73 CHINESE BROCADE ABOUT 1775  
 Dragon and cloud crests in various colors and gold, on a rich yellow background. From the Imperial Chinese loom at Suchaw.  
 Size: 25 x 29 inches
- 74 DEEP BLUE BROCADE ABOUT 1650  
 On a trellis Howo birds and dragons. Size: 25 x 25 inches
- 75 DEEP BLUE BROCADE ABOUT 1650  
 Howo birds and dragons on a trellis. Size: 25 x 25 inches
- 76 SMALL KARAORI ABOUT 1650  
 Pine tree and Tachibana crests on a lozenge floral background. The whole tinged dull red. Size: 14 x 19 inches

- 17- 77 GOLD BROCADE SQUARE ABOUT 1650  
Howo bird crests and Karakusa scrolls in various colors and gold, on a deep blue ground. Size: 18 x 20 inches
- 9- 78 RED NISHIKI SQUARE ABOUT 1775  
Floral and dragon crests in various colors and gold, on a deep dull red ground. Size: 20 x 20 inches
- 13- 79 CHINESE GOLD BROCADE ABOUT 1750  
Four-clawed golden dragons with precious stones, on a navy blue background. Size: 26 x 29 inches
- 13- 80 ICHOZURU KINRAN ABOUT 1625  
Single stem peony scroll pattern in gold, on a yellow ground. Length, 33 inches; width, 20 inches  
A valuable textile known as Anrakuan.
- 37- 81 BLUE HAWTHORN BROCADE ABOUT 1675  
Depicting a frozen lake's surface. The ice is crackled and the nearby plum tree is already blossoming. The gray petals of the flowers against the two shades of blue of the background form a very beautiful composition. Size: 31 x 34 inches  
An exceedingly rare example of the work of the Imperial Chinese loom of Suchaw.
- 14- 81A SAME BROCADE AS PRECEDING Size: 9 x 45 inches
- 19- 82 ATSUITA BROCADE ABOUT 1750  
Moth and butterfly in blue, brown and white against a light blue ground. Size: 31 x 46 inches
- 17- 83 IMPORTANT KARAORI ABOUT 1580  
Lozenges with flying storks alternating in green and red and brown, on a chocolate-colored ground. Length, 46 inches; width, 37 inches  
A superb example of Toyotomi textiles.
- 8- 84 YELLOW NISHIKI BROCADE ABOUT 1775  
Peony blossoms in silvery gray, red and gold, on an ecru background. Size: 24 x 48 inches
- 36- 85 IMPORTANT CHINESE DONSU ABOUT 1725  
Five-clawed dragons in various colors of reddish brown, against a chocolate-colored background. With a Shichin floral brocade border. Length, 64 inches; width, 32 inches



Imperial crests of chrysanthemums and kiri flowers in gold,  
on a dull red background. Size: 26 x 26 inches

From the Imperial Nishijin loom.

## SEVEN CHINESE BUDDHIST SCRIPTURES OF THE MING DYNASTY

LOTS 87-93

This collection of Chinese Buddhist Scriptures of the Ming dynasty were found in an old Buddhist temple in Sian-fu in the Province of Shensi. The books are folded in panoramic fashion, this style coming next to the oldest form of roll. There is a frontispiece wood engraving in form of a dragon frame tablet of the Imperial authority bearing date from The 11th day of the eleventh month in the 5th year of Cheng-Tung Ta Ming. (November 11th, 1440). The rare and beautiful polychrome textile covers of the scriptures are of the Ming dynasty, and so good is their state of preservation that the genuine Ming textiles can be closely identified, although the brocade folios are worn and faded.

It is important to note that the deckle edge and water mark testify to the genuineness of the Ming paper which is of the finest quality and was used only in preserving the sacred scriptures of that dynasty. They will be found to be of absorbing interest by book collectors.

### 87 TAI-FA-CHU DHARANI KIN

Scripture of Spell of Great Dharma Illumination.

Five volumes translated into Chinese from Sanscrit by Shana Kupta of Sui dynasty. (A. D. 589-618.) (Vols. I to V.)

In the volume one there is a woodcut frontispiece representing the Buddha in the centre, seated on a lotus-throne placed upon carved lion dai under a canopy with a treble nimbus behind him, promulgating the Law to the multitude of disciples, among whom rows of eminent Boddhisattvas, Lohans and others are seen, in attitude of adoration. Above, on a streaming cloud, fly two singing angels bearing lotus blooms. The floor is a pavement of square tiles decorated with Swastika design. Ten different textiles are used in covering the folded volumes.

### 88 TAI-FA-CHU DHARANI KIN

Scripture of Spell of Great Dharma Illumination.

Five volumes completing the above series. (Vols. VI to X.)

In the volume ten there is a full page wood engraving at the end of the book portraying the standing figure of Bishamon, the protector of promulgators of the Law of Buddha. As a rare Chinese black and white print of Ming dynasty, it has a wonderful quality of grace and power that the collectors of Oriental prints should notice with due interest.

89 MAHA SONGHI LITZ

Scripture of Great Moral Commandments.

Five volumes translated by Fa-hien of East Chin. (A. D. 317-419.) (Vols. I to V.)

Volume one has the illustrated frontispiece similar to the one of lot 87. Ten different brocades are used for decorating covers.

Fa-hien was a famous Buddhist priest who wrote "Buddha's Kingdom", after he had journeyed to India during A.D. 398 to 410.

90 MAHA SONGHI LITZ

Scripture of Great Moral Commandments.

Five volumes completing the above series. (Vols. VI to X.)

At the end of volume ten is a wood engraving of Bishamon similar to the one in lot 88.

91 JOICHI AGON KIN

Scripture of Buddha's Discourses Delivered In The Forest Of Shawei.

Ten volumes translated by Donma Nandai of Fu Ch'in. (A. D. 351-393.)

Volume one has a woodcut frontispiece similar to the one in lot 89. Volume ten contains a wood engraving of Bishamon as in the preceding lot.

There are twenty brocades and textiles decorating the covers.

92 JU-SHO LITZ

Scripture of Ten Recitations of Commandments.

Ten volumes translated by Kumaragiva of Yao Ch'in. (A. D. 402-412.) (Vols. I to X) with brocade folio.

The first and last volumes contain wood engravings similar to the ones in the preceding lot.

Twenty different brocades combined to make the covers.

93 FOUR VOLUMES OF MISCELLANEOUS SCRIPTURES

(a) Volume Ten of Paramitta Scripture.

This Scripture treats of Buddha's discourse on wisdom.

Wood engraving of Bishamon at the end of the book.

(b) One volume of Buddhist Ritual for Repentance.

(c) Two volumes of Yakushi Sammai Scripture.

These scriptures treat of the ritual performance of repentance by the aid of Yakushi Bodhisattva.

At the end of each volume is portrait of Bishamon. With brocade folio.



# A COLLECTION OF SIXTY-SEVEN DECORATIVE MAO-CHANG RUGS

LOTS 94-160

The Mao-Chang Rugs were made in Northern China and Manchuria. Because of their durability and light weight they are both useful and desirable. The designs on these fabrics—woven like a sort of tapestry—bear strong influence of Korean origin. Since the early Ming dynasty the Mongolians have been accustomed on festive occasions such as the celebrating of longevity, birthdays and weddings, to adorn their homes by draping the walls, loggias and entrance gates with these decorative rugs.

94 CHINESE HANGING RUG

Closely woven. In the field of old rose a design of five flying cranes is woven in various harmonious colors, a large crane being at the centre and two smaller ones at the upper and lower ends. Sprays of lily, peony and chrysanthemum flowers and birds painted in maroon. Many folds of horizontal polychrome bands woven at the both ends. Remarkably well preserved rug. Both sides woven and decorated alike.

Length, 11 feet; width, 3 feet 10 inches

95 CHINESE HANGING RUG

The design similar to the preceding. The rug is remarkably well preserved, and is a rare and valuable specimen.

Length, 10 feet 11 inches; width, 3 feet 10 inches

96 CHINESE HANGING RUG

Similar to the preceding.

Length, 11 feet 2 inches; width, 3 feet 10 inches

97 CHINESE MAO-CHANG HANGING RUG

Pale rose field. Five mandarin ducks pattern. Vases and jardinières with flowers and arbors decorated in dark brown. Striped bands at the ends. Both sides woven and decorated alike.

Length, 11 feet; width, 3 feet 9 inches

98 HANGING RUG

Similar to the preceding.

Length, 11 feet; width, 3 feet 9 inches

99 MAO-CHANG HANGING RUG

Blue field woven with five mandarin ducks of bright plumage with yellow bills and red webbed feet. Twelve sets of household utensils decorated in red and deep brown. Horizontal striped bands at the ends. Both sides woven and decorated alike.

Length, 11 feet; width, 3 feet 9 inches





**THIS PAGE IS LOCKED TO FREE MEMBERS**

Purchase full membership to immediately unlock this page

**SAVE \$3,999,994**

Did you know we sell  
paperback books too?

To buy our entire catalog  
in paperback would cost  
over \$4,000,000

Access it all now for  
\$8.99/month

\*Fair usage policy applies

**Continue**



105 MING MAO-CHANG RUG

Closely woven like a tapestry. The black parts of the plumage and bills of five cranes have white edges. Very early and unique specimen. Length, 6 feet; width, 4 feet

106 MING MAO-CHANG RUG

Soft and thin texture. Field of beautiful old rose with pattern of five cranes, their plumage in light and dark browns, gray, blue and egg yellow. Polychrome striped bands in subdued tone at both ends.

Length, 5 feet 5 inches; width, 4 feet 3 inches

107 VALUABLE MONGOLIAN WEDDING RUG

Smooth texture, closely woven. The centre field in rich Tartar vermilion hue. Five conventional butterfly wing patterns and two peony flower medallions are woven in white, yellow, pea green, old rose, gray and maroon with detail of hand decoration in various delicate colors. The areas of both ends in natural camel's hair gray with narrow bands of diapered patches in dull red, gray, black and maroon. Exceedingly rare. Length, 6 feet; width, 4 feet

[SEE FRONTISPIECE]

108 RARE MONGOLIAN WEDDING RUG

Five symbolic patterns of butterfly wings woven in white, maroon, pink and gray in the field of pale pink and detail of hand decoration. The areas of both ends in natural camel's hair gray with bands of diapered patches. The large ovate wing pattern at the centre represents a male butterfly.

Length, 5 feet 9 inches; width, 3 feet 11 inches

109 RARE MONGOLIAN WEDDING RUG

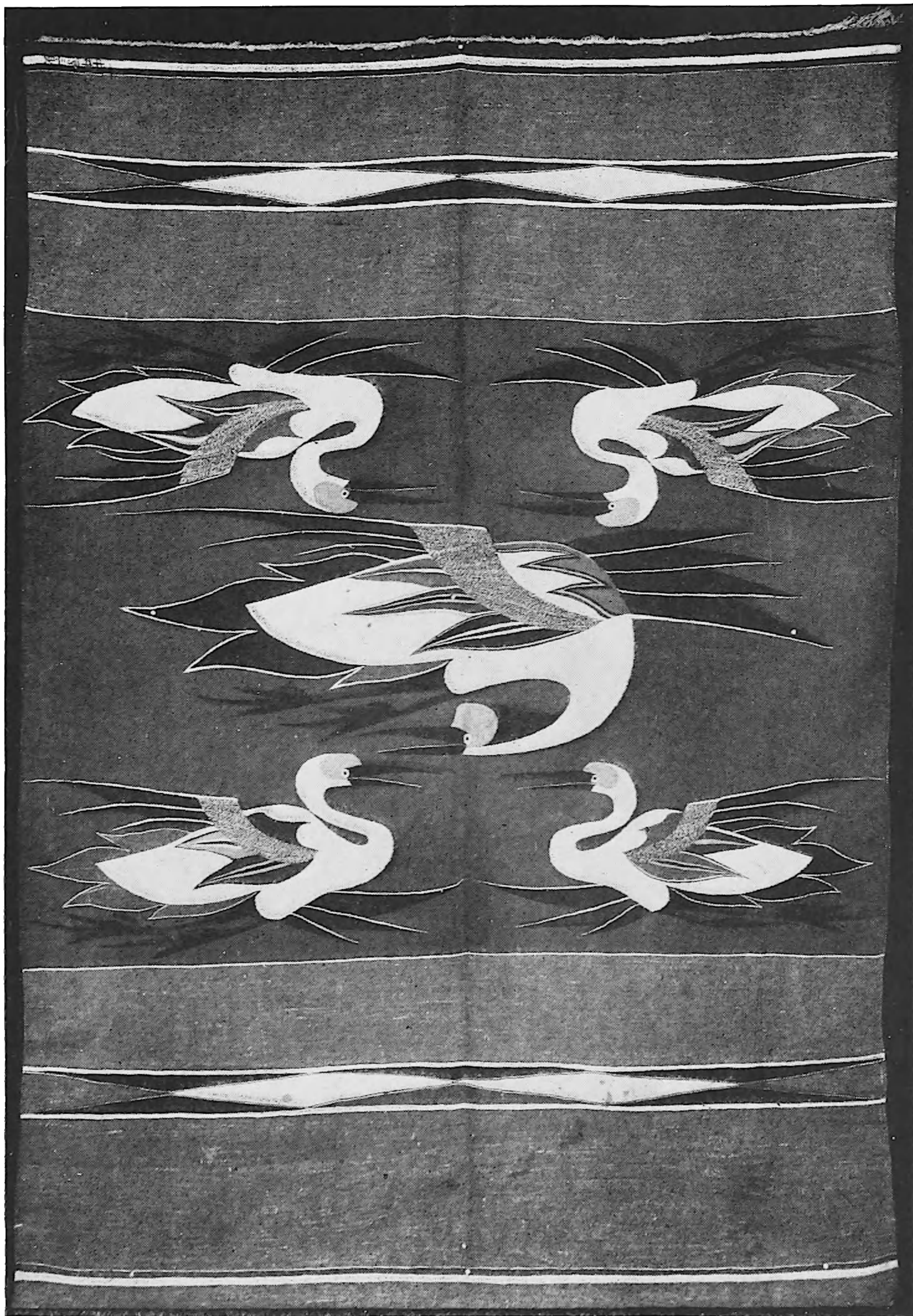
Similar to the preceding. The centre panel representing a conventional butterfly wing in this rug signifies that it is female, the lower edge of the wing being waved.

Length, 5 feet 9 inches; width, 3 feet 11 inches

110 MONGOLIAN MAO-CHANG RUG

Beautiful thin texture and closely woven. Field of deep apricot hue decorated at the centre with a Fu-dog medallion in octagonal border and vases arranged with flowers displayed around it. Broad floral border with scroll fret corners. Length, 6 feet; width, 3 feet 3 inches





RARE MAO-CHANG RUG  
[NUMBER 100]





111 CHINESE MAO-CHANG RUG

Rich magenta red field woven with five mandarin ducks, their plumage in bright polychrome, bills in yellow and webbed feet in green. Floral twigs, jewel symbols and key fret border painted in black and maroon. Horizontal striped bands are woven in at both ends.

Length, 7 feet 3 inches; width, 4 feet 10 inches

112 CHINESE MAO-CHANG RUG

Similar to the preceding.

Length, 7 feet 4 inches; width, 4 feet 11 inches

113 MONGOLIAN MAO-CHANG RUG

Soft camel's hair gray. Decorated with design of gnarled blooming plum tree, bamboo and chrysanthemum flowers; geometric border interrupted with floral pattern.

Length, 7 feet 2 inches; width, 4 feet 10 inches

114 MONGOLIAN MAO-CHANG RUG

Field of camellia leaf green. Decorated with design of gnarled plum tree and bamboo foliage in dark green; fancy floral border. Length, 7 feet 3 inches; width, 4 feet 11 inches

115 MONGOLIAN MAO-CHANG RUG

In the field of pale apple green displaying a woven pattern of five flying cranes, sprays of orchids, plum and chrysanthemum flowers decorated in deep brown and green. Striped bands at both ends. Length, 6 feet; width, 4 feet 5 inches

116 MONGOLIAN MAO-CHANG RUG

Light apple green field. Five flying cranes pattern, their plumage in bright polychrome, floral sprays and hovering birds in deep brown and green. Striped bands at both ends.

Length, 6 feet; width, 4 feet 6 inches

117 MONGOLIAN MAO-CHANG RUG

Pattern similar to the preceding. The field is of apple green.

Length, 7 feet 5 inches; width, 4 feet 11 inches

118 MONGOLIAN MAO-CHANG RUG

Woven similar to the preceding and decorated with design of blooming meadow flowers.

Length, 7 feet 5 inches; width, 4 feet 11 inches

119 MONGOLIAN MAO-CHANG RUG

3-5 Pattern and colors are similar to the preceding. Dragon medallions and key pattern border.

Length, 7 feet 3 inches; width, 4 feet 10 inches

120 MONGOLIAN MAO-CHANG RUG

16 The pattern similar to the preceding. Slight difference in hand decoration.

Length, 7 feet 4 inches; width, 4 feet 11 inches

121 TWO MAO-CHANG HANGING RUGS

7-5 Field of deep sea-weed green displaying five mandarin ducks, and household ornaments. The upper and lower ends have rectagonal panels of fret border containing three medallions of Longevity. Both sides woven alike.

Length, 10 feet 11 inches; width, 3 feet 10 inches

122 MONGOLIAN MAO-CHANG RUG

6 Tartar vermilion field ornamented with design of blooming plum tree and birds; Key pattern border.

Length, 7 feet 4 inches; width, 4 feet 10 inches

123 MONGOLIAN MAO-CHANG RUG

Apple green field woven with five mandarin ducks of bright plumage. Twigs of flowers and shrubs painted in dark brown and green.

Length, 6 feet; width, 4 feet 4 inches

The following hangings were used in the Mongolian Lamasery as covers for the tombs of the tribe chieftains. They are woven with Mongolian sheep's wool, camel's and Thibetan goat's hair. The principal motif of decoration which is partly painted and partly woven is a typical view of the sacred burial mounds, with details of scenery, flowers, animals, trees and figures. The contrasting polychrome decorations are so carefully blended that the effect is unique and the continuity of the rug is complete. Each rug has numerous horizontal bands of varied colors at upper and lower ends.

124 MING MAO-CHANG RUG

7-2 Partially woven and partially hand colored. A sequence of semi-circular mounds and irregular horizontal panels filled with decoration of Mongolian animals, landscapes, palace terraces and flowers in deep red and subdued polychrome. From a Mongolian Lama Temple.

Length, 6 feet 4 inches; width, 4 feet 4 inches



125 MONGOLIAN MAO-CHANG RUG

17-  
In the centre, two semi-circular fields, one above the other, in pink and red, are decorated with a pair Fu-dogs and floral ornaments. Sequence of horizontal bands in white, red, pink and green are differently treated with conventional flowers.

Length, 6 feet 10 inches; width, 4 feet 10 inches

126 MONGOLIAN MAO-CHANG RUG

15-  
Closely woven. Sacred mound design; semi-circular fields and series of horizontal bands decorated with Mongolian country manor, bird and flowers, pagoda top, horses, poultry, grape vines with squirrels and tree of life with rising sun.

Length, 7 feet 5 inches; width, 5 feet

127 MONGOLIAN MAO-CHANG RUG

42-  
Similar to the preceding. The colors are wonderfully well preserved and the rug is in fine condition.

Length, 5 feet 10 inches; width, 4 feet 5 inches

128 MONGOLIAN MAO-CHANG RUG

45-  
Soft texture, thinly woven. The centre displays a round panel with a square border portraying a Mongolian Princess riding on the back of a Fu-dog. The surrounding panels of various forms are filled with court dancers, palace terraces and decorated mounds in deep red, pale green, pink, blue and maroon. Length, 5 feet 8 inches; width, 4 feet 4 inches

129 MONGOLIAN MAO-CHANG RUG

40-  
White field woven with sequence of semi-circular mounds in magenta red and pink. Numerous horizontal bands decorated with series of festival processions depicting rider on the back of Fu-dog, banner bearers, dancers and floats laden with Mongolian maidens. At the top, a holy mountain with tree of life and rising sun.

Length, 7 feet 4 inches; width, 4 feet 11 inches

130 MING MAO-CHANG RUG

40-  
Similar to the preceding.

Length, 7 feet 4 inches; width, 4 feet 11 inches



131 MONGOLIAN MAO-CHANG RUG

Typical Mongolian design showing a sequence of semi-circular and striped spaces ornamented in vivid polychrome a scene of longevity feast, animating Fu-dog, pagoda and figures. Striped bands at the ends.

Length, 7 feet 4 inches; width, 4 feet 11 inches

132 MONGOLIAN MAO-CHANG RUG

The pattern similar to the preceding; detail of equerries, horses, pagoda top, tree of life and country manor with blooming trees.

Length, 7 feet 6 inches; width, 4 feet 11 inches

133 MAO-CHANG HANGING RUG

The pattern similar to the preceding; subdued blue field. Howo birds, hovering sparrows and floral twigs decorated in deep red and maroon; Swastika border frame at the top.

Length, 10 feet 10 inches; width, 3 feet 9 inches

134 MONGOLIAN HANGING RUG

Camel's hair gray field woven with five mandarin ducks in ivory hue with red bills and webbed feet. Vases and jardinières with flowers and arbors painted in black and maroon. At the top and bottom a Swastika border enclosing four longevity medallions. The both sides woven and decorated alike.

Length, 11 feet; width, 3 feet 10 inches

135 MAO-CHANG HANGING RUG

Dark blue field woven with five mandarin ducks in ivory hue. Seven sets of household ornaments decorated in black. At the top and bottom Swastika border frame enclosing four longevity medallions.

Length, 11 feet; width, 3 feet 10 inches

136 PAIR MONGOLIAN MAO-CHANG HANGINGS

Light green field woven with five mandarin ducks, their plumage in ivory, green and gray hues. Hand decorations in design of Howo bird perched on rock, sprays of peony and plum flowers with flying birds all over the middle field. Across the top a rectagonal frame of Swastika border containing four longevity medallions. Both sides woven and decorated alike.

Length, 10 feet 8 inches; width, 3 feet 9 inches

137 CHINESE HANGING RUG

Similar to the preceding. The rich vermilion field; painted decoration displaying household ornaments. The both sides woven and decorated alike.

Length, 11 feet 1 inch; width, 3 feet 11 inches





**THIS PAGE IS LOCKED TO FREE MEMBERS**

Purchase full membership to immediately unlock this page



# HISTORY

Tens of thousands of important historical sources, many previously unobtainable, are now available for the first time with a Forgotten Books Full Membership.

Unlimited Access  
\$8.99/month

**Continue**

\*Fair usage policy applies



145 MONGOLIAN MAO-CHANG RUG

Apple green field. Five mandarin ducks pattern. Vases and jardinières arranged with flowers and arbors in green and red; striped bands at both ends.

Length, 6 feet 4 inches; width, 4 feet 11 inches

146 MONGOLIAN MAO-CHANG RUG

Natural camel's hair field. Woven pattern of mandarin ducks of bright plumage with pink bills and webbed feet. Double line border with scroll corners.

Length, 6 feet; width, 4 feet 10 inches

147 MONGOLIAN MAO-CHANG RUG

Natural camel's hair field. Woven pattern of five mandarin ducks. Fret work border, flying birds and floral twigs in maroon.

Length, 5 feet 11 inches; width, 4 feet 7 inches

148 PAIR MAO-CHANG RUGS

Rich magenta red field. Five mandarin duck pattern, vases and flowers.

Length, 6 feet 6 inches; width, 5 feet

149 MONGOLIAN MAO-CHANG RUG

White field, woven in with five mandarin ducks with red bills and webbed feet. Kirin, the sacred animal, and floral twigs in black and green.

Length, 6 feet 2 inches; width, 4 feet 2 inches

150 MONGOLIAN MAO-CHANG RUG

Pale green field; panel of storks and pine tree under rising sun. Broad geometric border.

Length, 7 feet 3 inches; width, 4 feet 10 inches

151 MONGOLIAN MAO-CHANG RUG

Pale green field. The centre panel shows a shrine of Longevity, four sacred cranes guarding it under rising sun; broad border of pine branches and blooming plum flowers.

Length, 6 feet 2 inches; width, 4 feet 3 inches

152 MONGOLIAN MAO-CHANG RUG

Seaweed green field woven with five white mandarin ducks with red bills and webbed feet. Peony flowers and hovering birds with floral scroll corners in dark brown and green.

Length, 5 feet 9 inches; width, 4 feet 4 inches



153 MONGOLIAN MAO-CHANG RUG

Pale green field. The panel of bamboo and plum trees with double borders of key pattern.

40- Length, 6 feet 1 inch; width, 4 feet 4 inches

154 MONGOLIAN MAO-CHANG RUG

34- Corn yellow field. The decorated panel shows a shrine of Longevity with various symbols of good omen and immortal fish guarding a gem. Geometric border with floral ornament.

Length, 6 feet; width, 4 feet 4 inches

155 MONGOLIAN MAO-CHANG RUG

40- Pale green field. Naturalistic design of bamboo trees, chrysanthemum flowers and hovering birds; broad geometric border interrupted with floral motif.

Length, 7 feet 6 inches; width, 4 feet 11 inches

156 MONGOLIAN MAO-CHANG RUG

15- Rich magenta red field. The mandarin ducks, woven in, have green bills and webbed feet. Key pattern border and vases arranged with flowers. Striped bands at both ends.

Length, 7 feet 3 inches; width, 4 feet 11 inches

157 MONGOLIAN MAO-CHANG RUG

40- Natural camel's hair field woven with five ducks with yellow bills and red webbed feet. Double line border and fish eggs, fret corners.

Length, 6 feet; width, 4 feet 5 inches

158 MONGOLIAN MAO-CHANG RUG

15- Natural camel's hair field, woven with design of five mandarin ducks in seaweed green hue, pale pink, blue and yellow; the entire reserve area is ornamented with foliate diaper design with immortal bats and medallions of long life. Key pattern border. Length, 8 feet 8 inches; width, 6 feet 9 inches

159 MONGOLIAN MAO-CHANG RUG

40- In the field of camel's hair gray, woven with design of five mandarin ducks of bright plumage. Floral scrolls and twigs decorated in dark brown.

Length, 6 feet; width, 4 feet 5 inches

160 MONGOLIAN MAO-CHANG RUG

40- Pattern similar to the preceding. With simple fret border.

Length, 6 feet 1 inch; width, 4 feet 6 inches